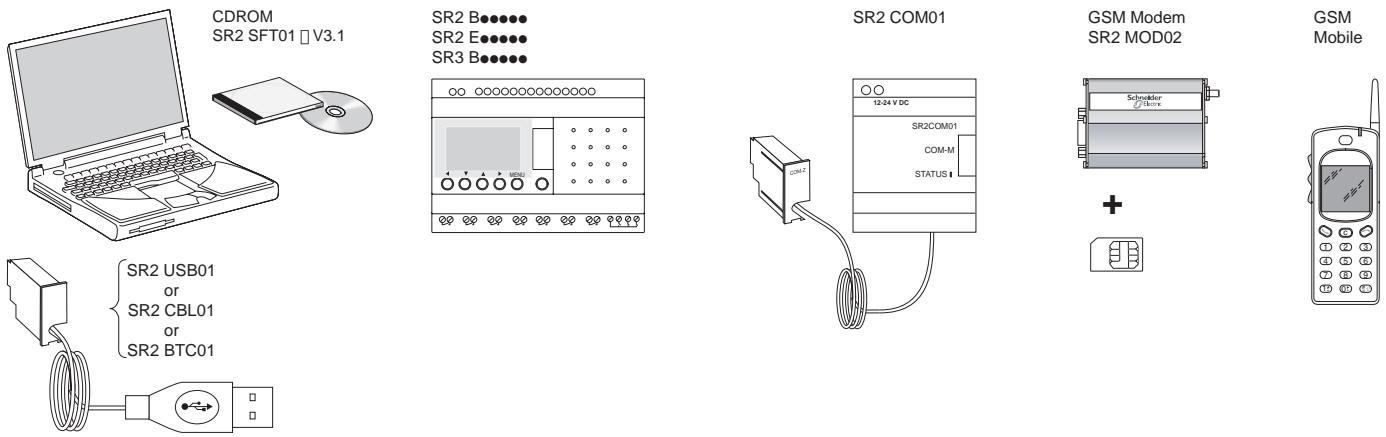


1500 0420

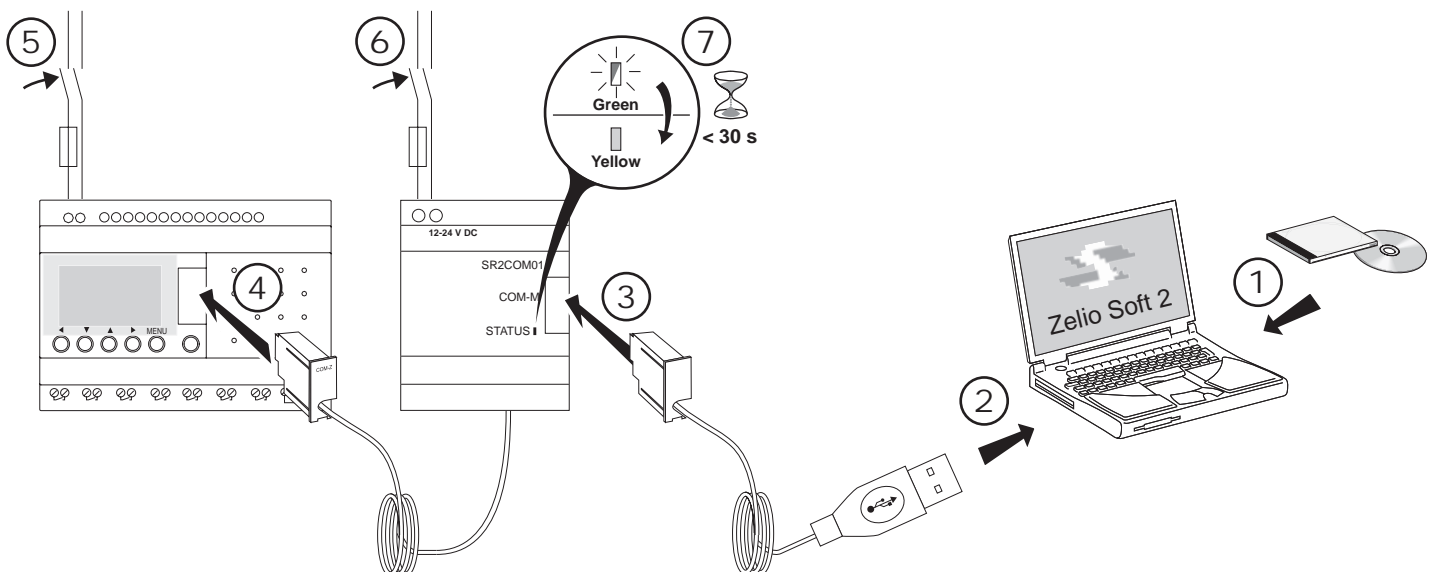


**Aim: SR2 COM01 alarm message on your mobile phone.**  
**Objectif : réception sur votre téléphone mobile d'un message d'alarme provenant du SR2 COM01.**  
**Zweck: Empfang einer Alarmmeldung vom SR2 COM01 an Ihrem Mobiltelefon.**  
**Objetivo: Recepción, en el teléfono móvil, de un mensaje de alarma procedente del SR2 COM01.**  
**Obiettivo: Ricezione sul cellulare di un messaggio d'allarme proveniente dalla SR2 COM01.**  
**Objectivo: recepção no seu telemóvel de uma mensagem de alarme proveniente do SR2 COM01.**

**A** Required hardware / Matériel nécessaire / Erforderliche Hardware  
 Material requerido / Hardware richiesto / Hardware necessário

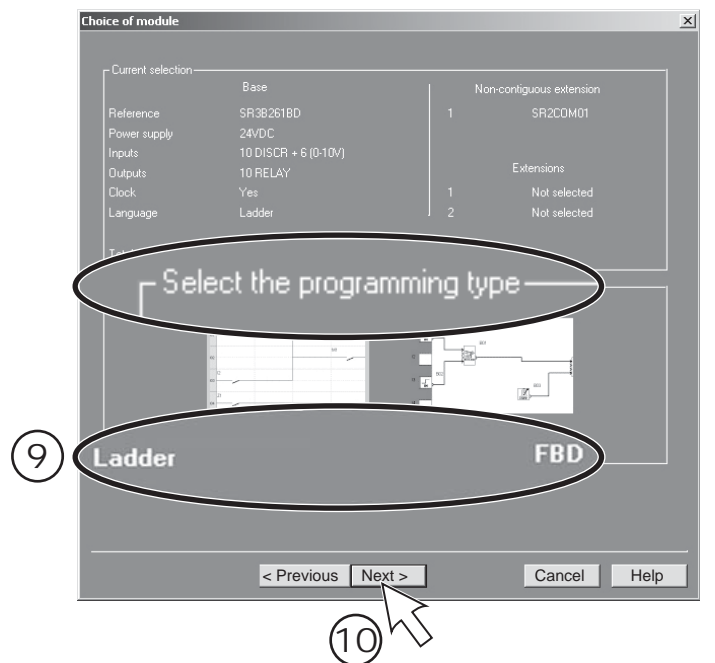
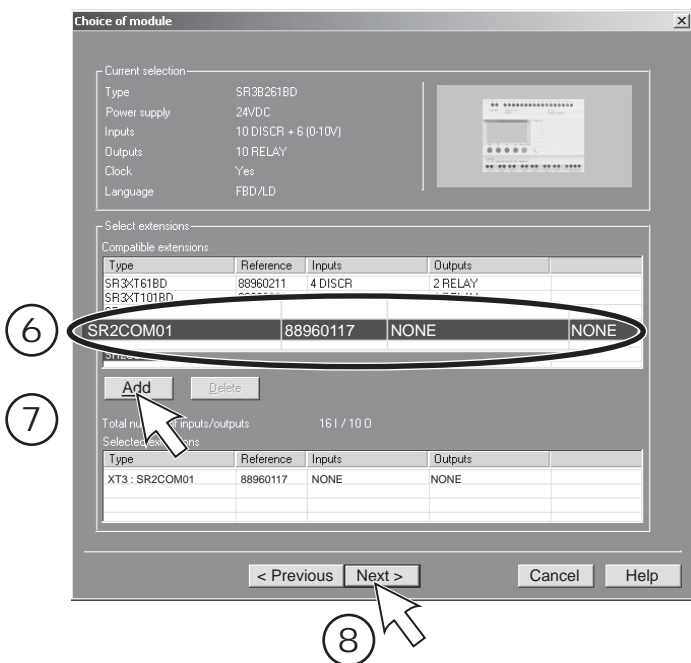
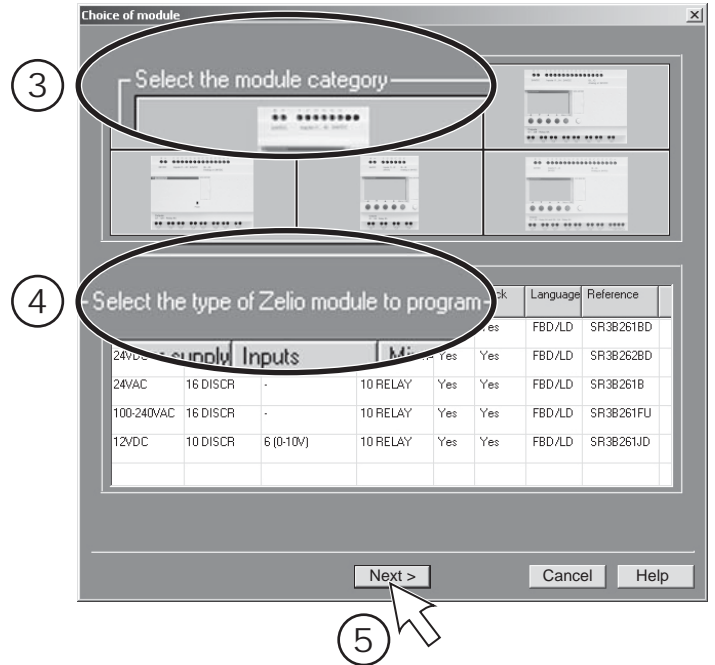
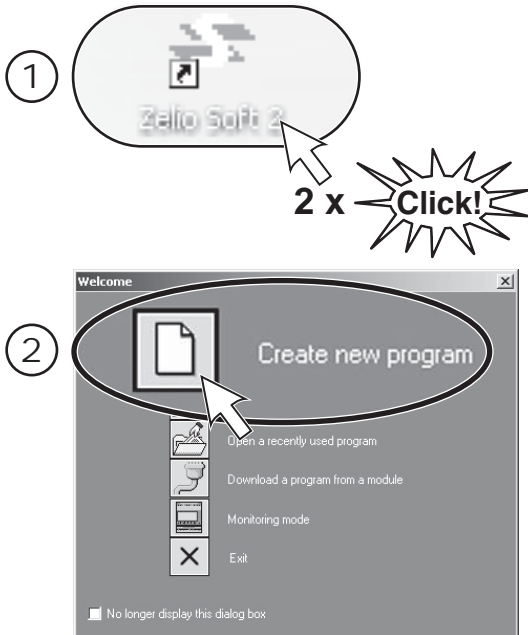


**B** Hardware cabling for programming and transfer / Câblage du matériel pour la programmation et le transfert / Verkabelung der Hardware für die Programmierung und die Übertragung  
 Cableado del material para la programación y la transferencia / Cavi di collegamento per la programmazione e il trasferimento / Cablagem do hardware para a programação e a transferência

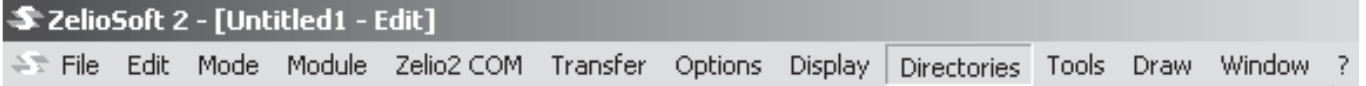


Programming and transfer / Programmation et transfert / Programmierung und Übertragung  
 Programación y transferencia / Programmazione e trasferimento / Programação e transferência

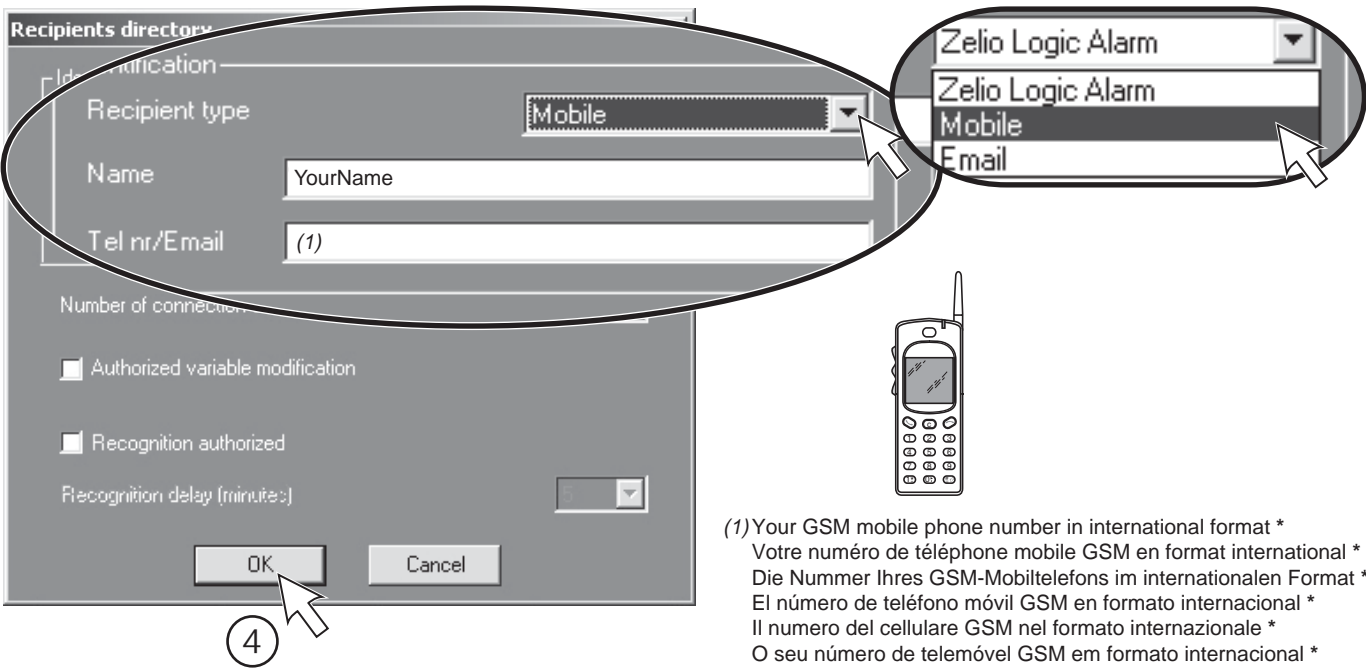
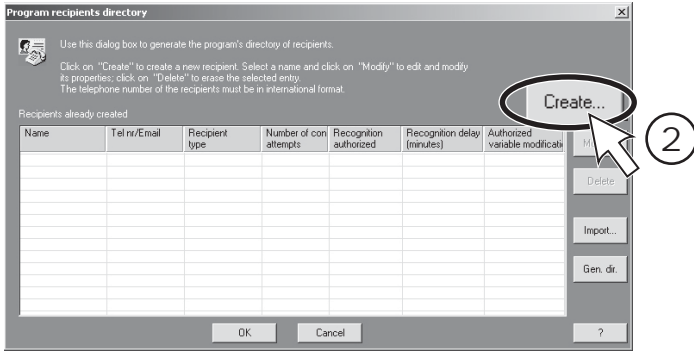
C



D

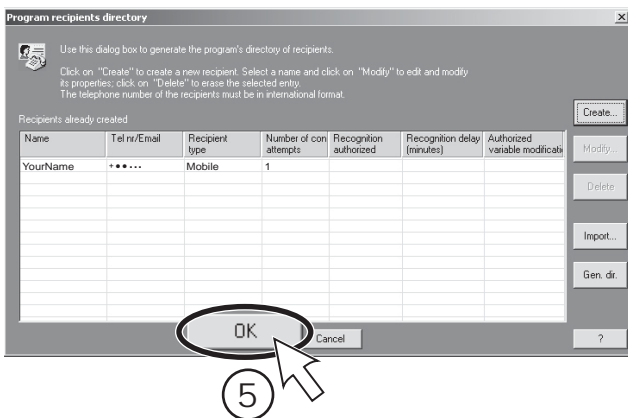


- 1 Directories : Program recipients directory...
- Annuaire : Annuaire des destinataires du programme...
- Verzeichnisse : Verzeichnis der Programmempfänger...
- Libretas : Libreta de direcciones del programa...
- Elenchi : Elenco dei destinatari del programma...
- Listas : Lista de destinatários do programa...



(1) Your GSM mobile phone number in international format \*  
 Votre numéro de téléphone mobile GSM en format international \*  
 Die Nummer Ihres GSM-Mobiltelefons im internationalen Format \*  
 El número de teléfono móvil GSM en formato internacional \*  
 Il numero del cellulare GSM nel formato internazionale \*  
 O seu número de telemóvel GSM em formato internacional \*

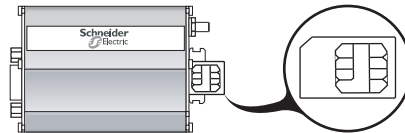
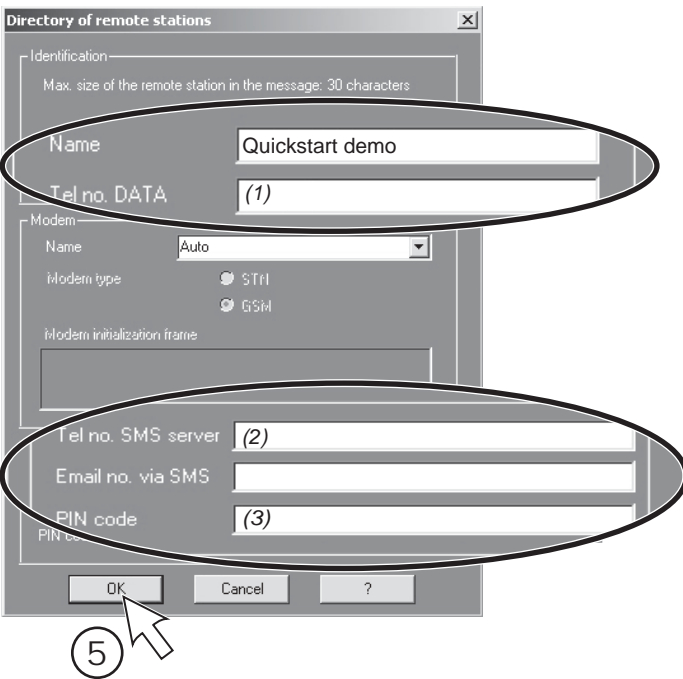
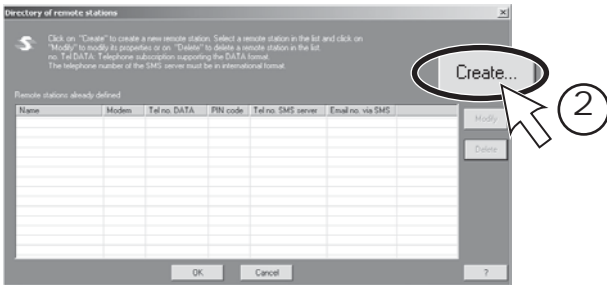
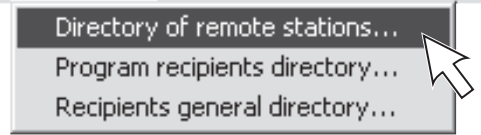
\* International format : replace 00 by +



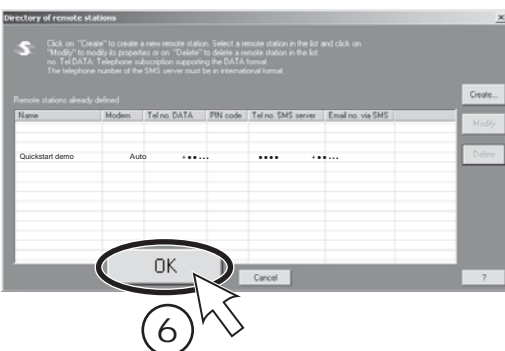
E



- 1 Directories : Directory of remote stations...
- Annuaire : Annuaire des stations distantes...
- Verzeichnis : Verzeichnis der dezentralen Stationen...
- Libretas : Libreta de estaciones remotas...
- Elenchi : Elenco delle stazioni remote...
- Listas : Lista das estações remotas...

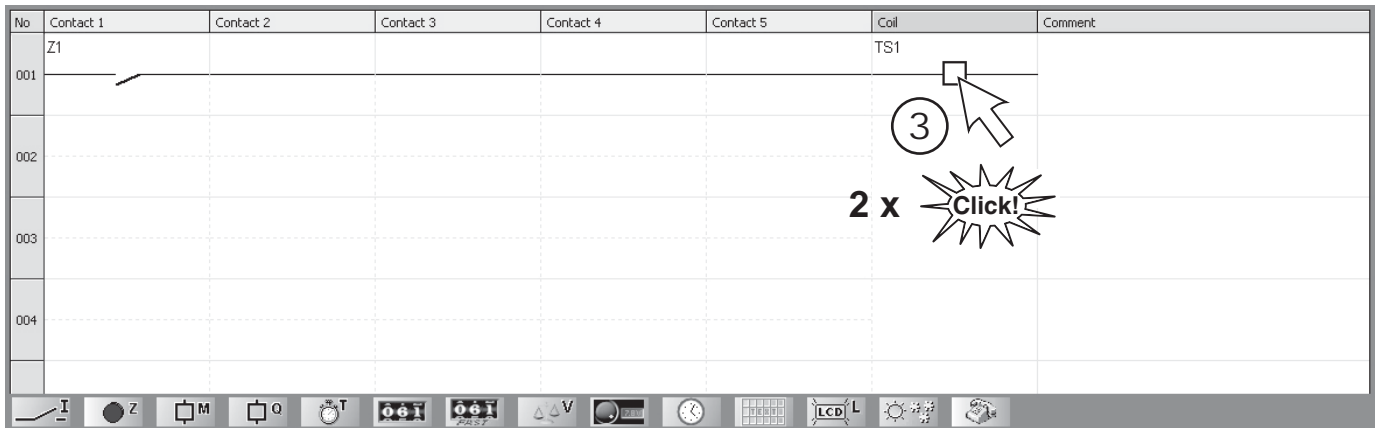
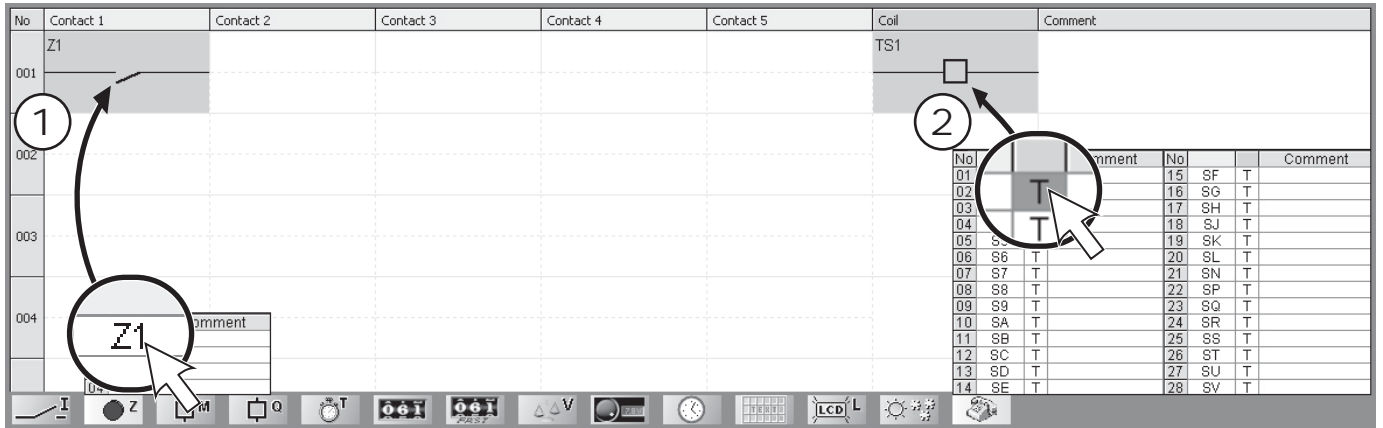


- (1) The SIM card number of your SR2MOD02 (in international format)\* / Le numéro de la carte SIM de votre SR2MOD02 (au format international)\* / Die Nummer der SIM-Karte Ihres SR2MOD02 (im internationalen Format)\*  
El número de la tarjeta SIM de su SR2MOD02 (en formato internacional)\* / Il numero della scheda SIM del vostro SR2MOD02 (in formato internazionale)\* / O número do cartão SIM do seu SR2MOD02 (em formato internacional)\*  
\* **International format : replace 00 by +**
- (2) The SIM card's SMS server number of your SR2MOD02 (in international format)\* / Le numéro de serveur SMS de la carte SIM de votre SR2MOD02 (au format international)\* / Die Nummer der SMS-Server der SIM-Karte Ihres SR2MOD02 (im internationalen Format)\*  
El número de servidor SMS de la tarjeta SIM de su SR2MOD02 (en formato internacional)\* / Il numero del server SMS della scheda SIM del vostro SR2MOD02 (in formato internazionale)\* / O número do servidor SMS do cartão SIM do seu SR2MOD02 (em formato internacional)\*  
\* **International format : replace 00 by +**
- (3) The SIM card's PIN code of your SR2MOD02 (do not enter if deactivated) / Le code PIN de la carte SIM de votre SR2MOD02 (ne pas remplir si désactivé) / Der PIN-Code der SIM-Karte Ihres SR2MOD02 (nicht ausfüllen, falls deaktiviert)  
El código PIN de la tarjeta SIM de su SR2MOD02 (no lo introduzca si está bloqueada) / Il codice PIN della scheda SIM del vostro SR2MOD02 (non indicarlo se disattivata) / O código PIN do cartão SIM do seu SR2MOD02 (não preencher se estiver desativado)



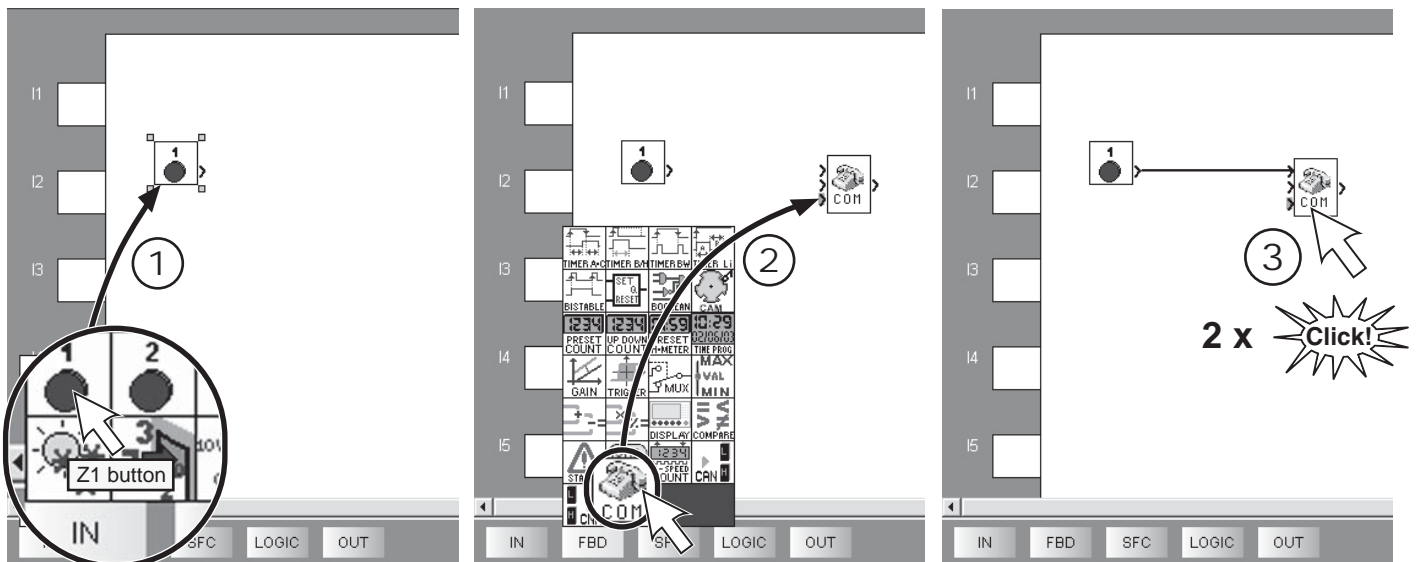
F

Ladder

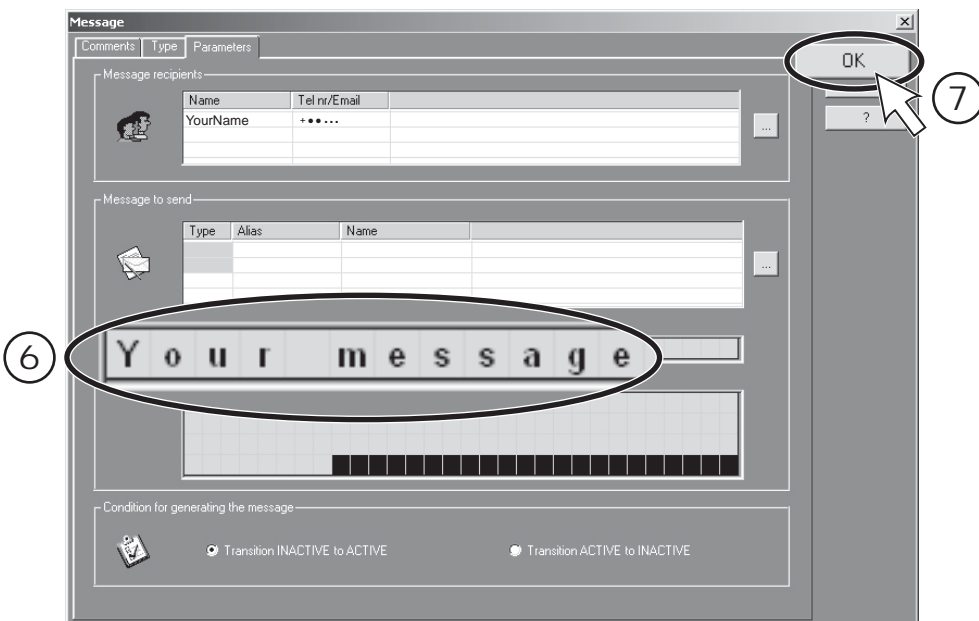
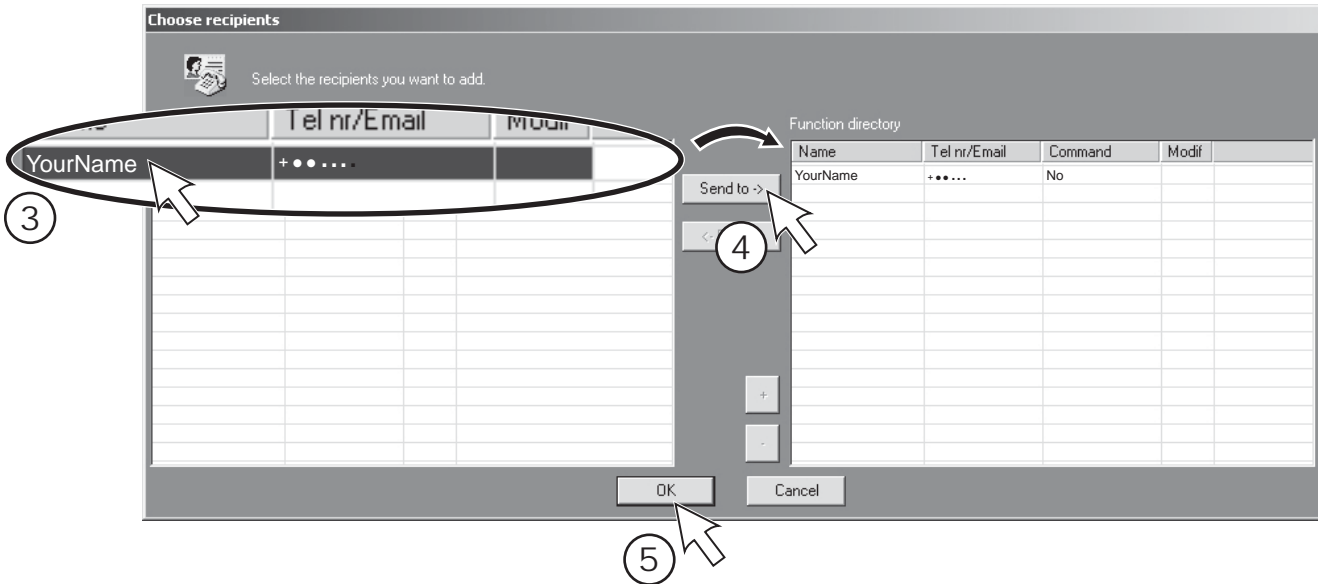
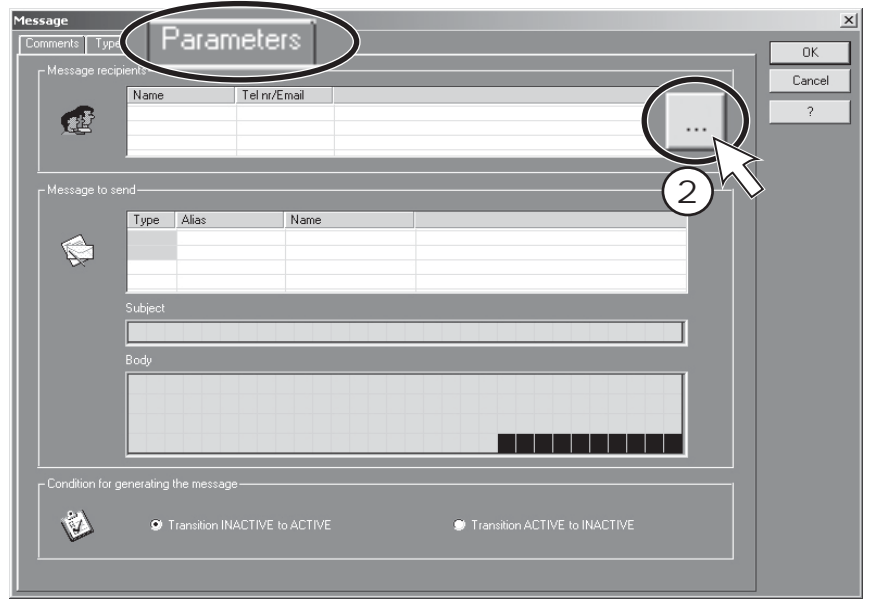
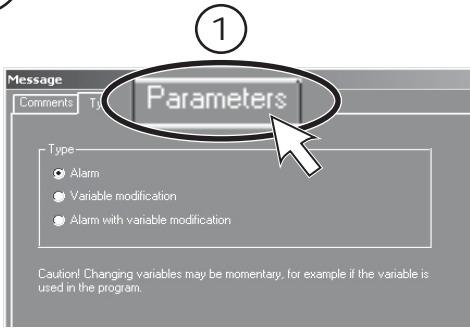


or / ou / oder / o bien / oppure / ou

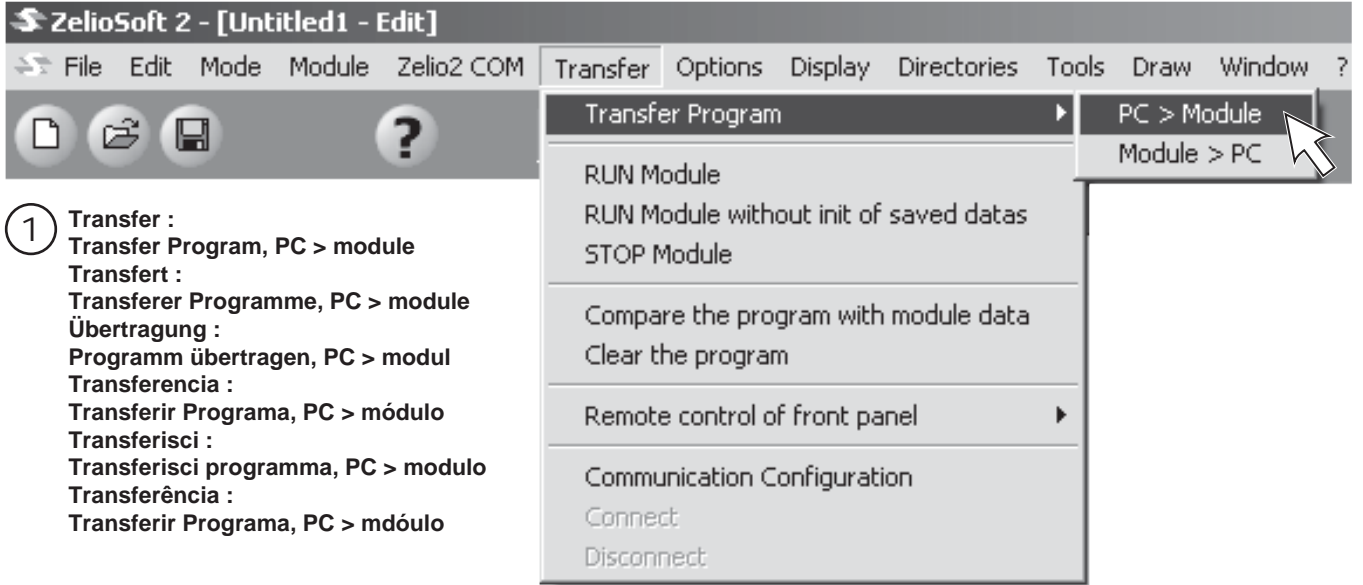
FBD



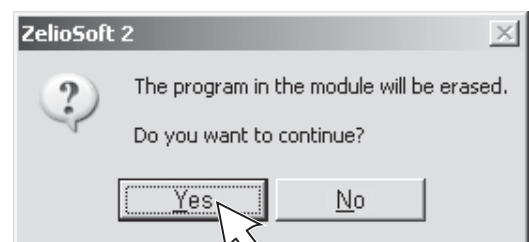
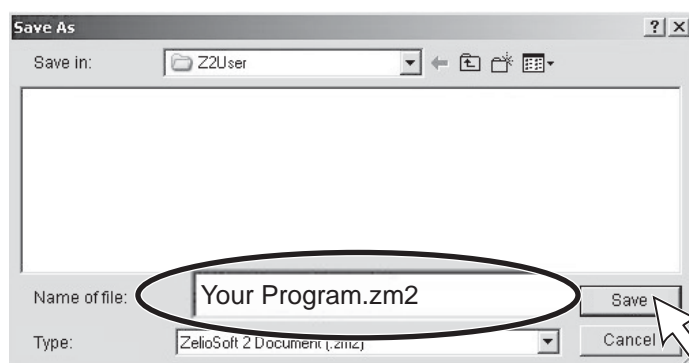
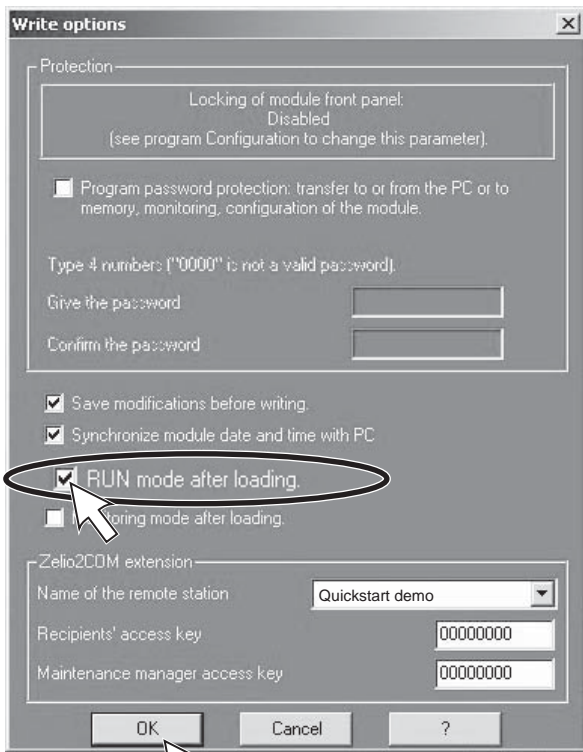
G



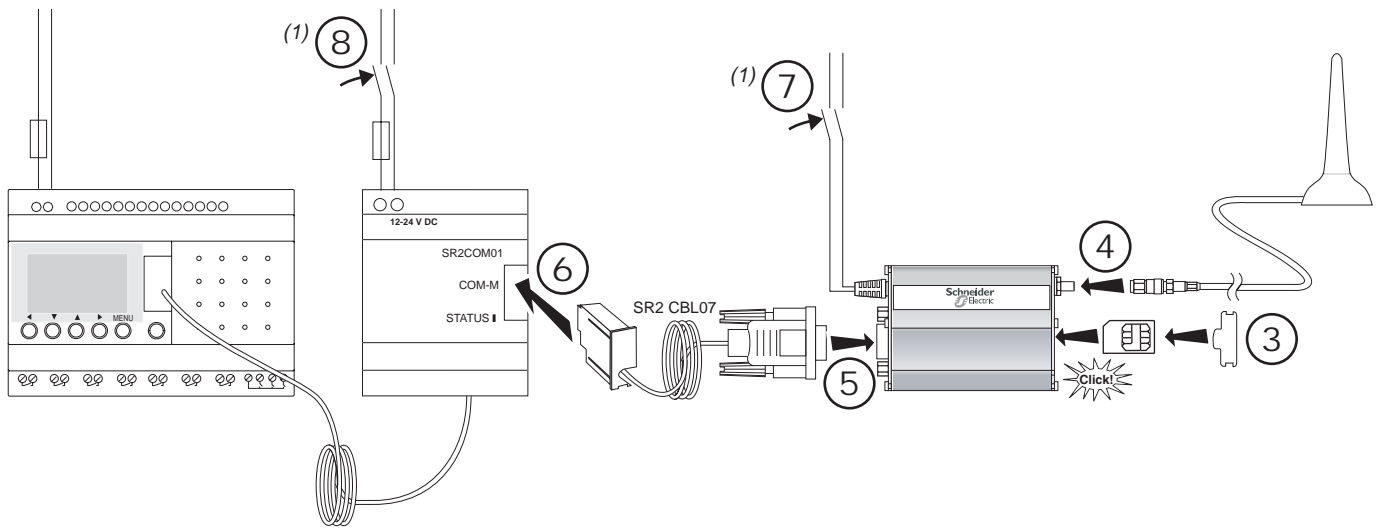
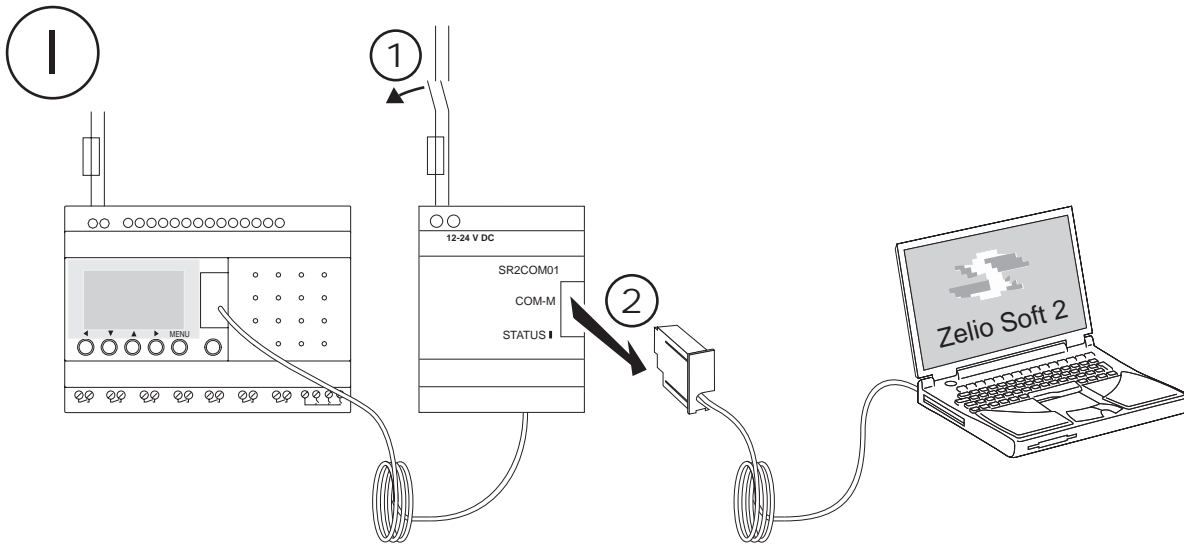
H



- 1 Transfer :  
Transfer Program, PC > module
- Transfert :  
Transferer Programme, PC > module
- Übertragung :  
Programm übertragen, PC > modul
- Transferencia :  
Transferir Programa, PC > módulo
- Transferisci :  
Transferisci programma, PC > modulo
- Transferência :  
Transferir Programa, PC > módulo



Operation / Exploitation / Betrieb / Utilización / Uso / Exploração



(1) Do not switch the SR2COM01 on before the SR2MOD02. / Ne mettez pas sous tension le SR2 COM01 avant le SR2 MOD02.  
 Schalten Sie das SR2COM01 nicht vor dem SR2MOD02 ein. / No conecte el dispositivo SR2COM01 antes del SR2MOD02.  
 Non mettere sotto tensione la SR2COM01 prima della SR2MOD02. / Não ligue o SR2COM01 antes do SR2MOD02.

