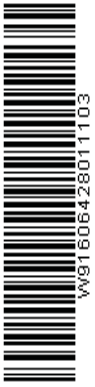
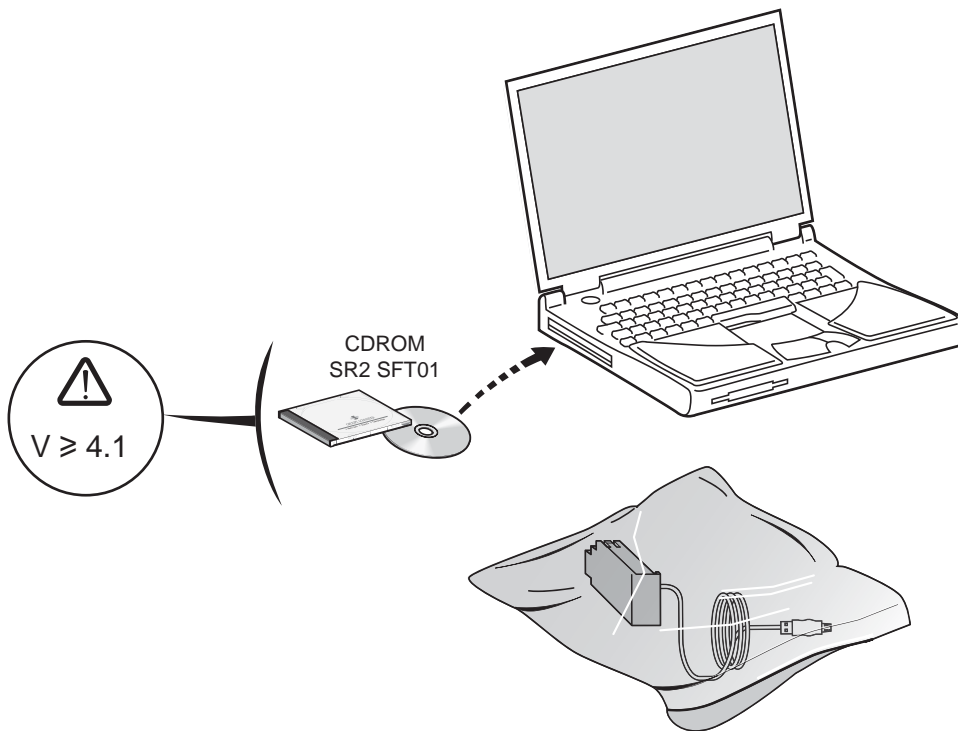


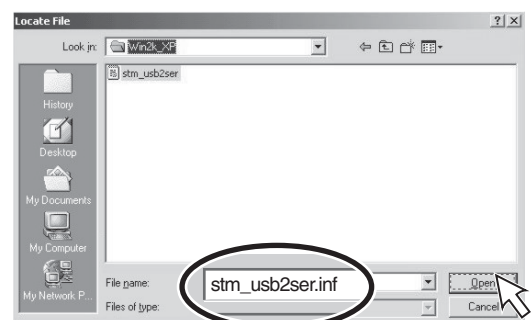
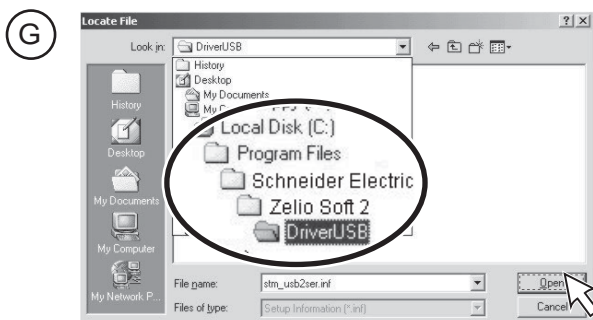
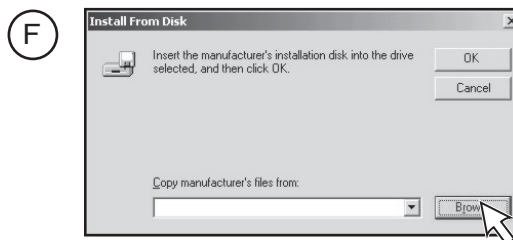
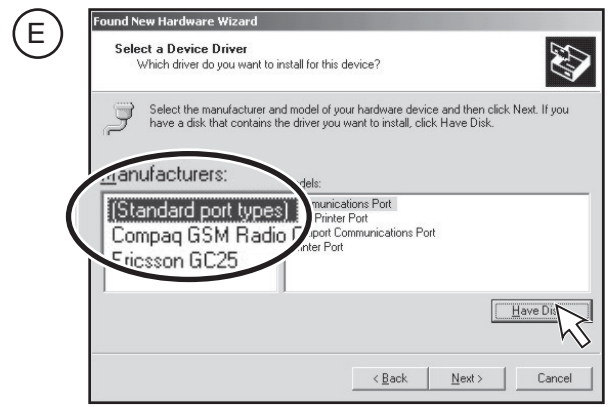
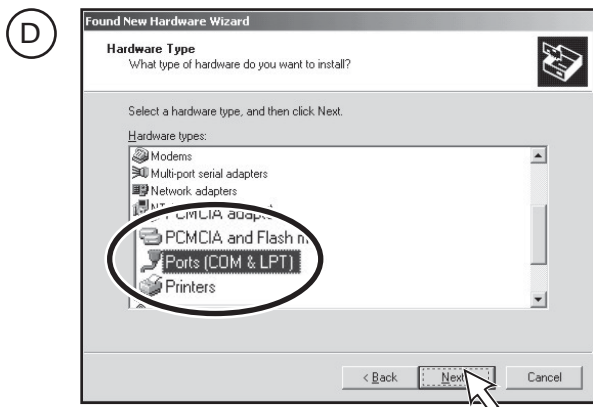
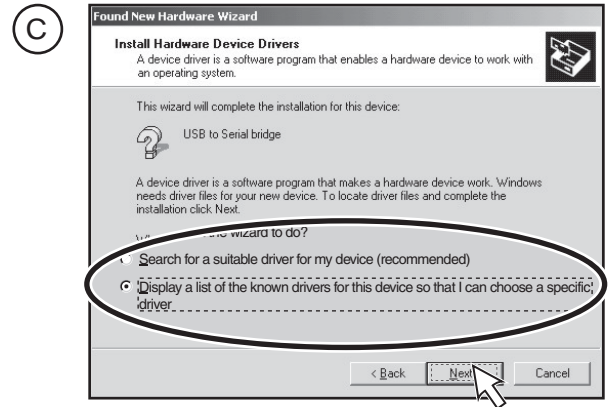
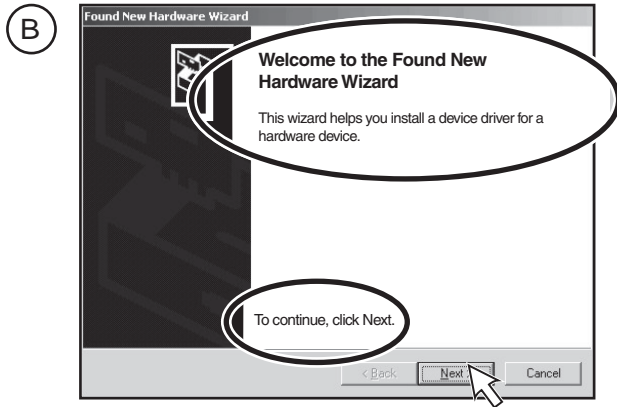
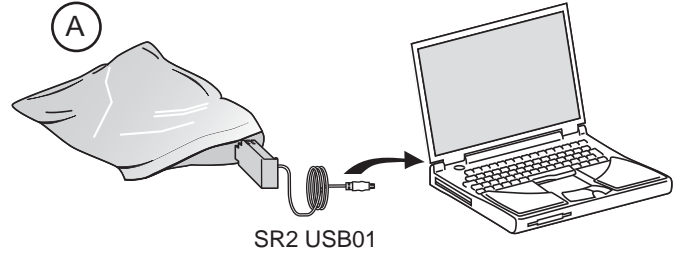
1500 0423

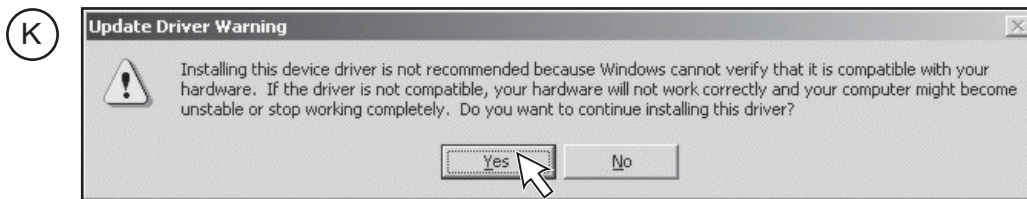
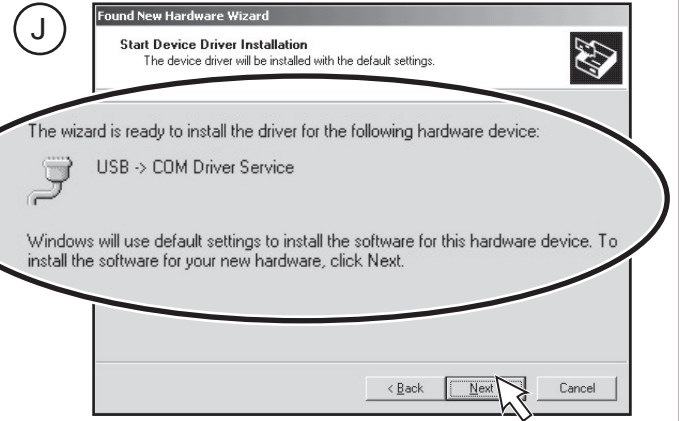
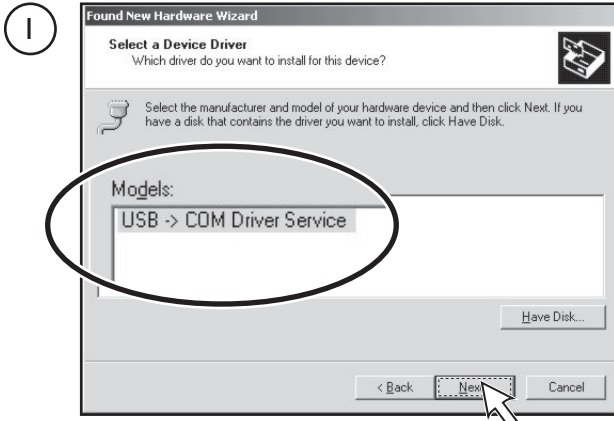
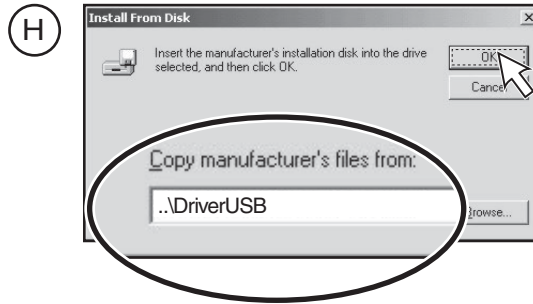


**Using the USB cable with Windows 2000**  
**Mise en œuvre du câble USB sous Windows 2000**  
**USB-Kabel unter Windows 2000 installieren**  
**Utilización del cable USB con Windows 2000**  
**Installazione del cavo USB con Windows 2000**  
**Instalação do cabo USB no Windows 2000**



- 1** To install USB cable **SR2 USB01**, apply the following steps:  
 A, B, C, D, E, F, G, H, I, J, K, L
- Pour installer le câble USB **SR2 USB01** suivre les étapes suivantes :  
 A, B, C, D, E, F, G, H, I, J, K, L
- Um das USB-Kabel **SR2 USB01** zu installieren, führen Sie folgende Schritte durch:  
 A, B, C, D, E, F, G, H, I, J, K, L
- Para instalar el cable USB **SR2 USB01**, seguir los siguientes pasos:  
 A, B, C, D, E, F, G, H, I, J, K, L
- Per installare il cavo USB **SR2 USB01** seguire i punti seguenti:  
 A, B, C, D, E, F, G, H, I, J, K, L
- Para instalar o cabo USB **SR2 USB01** seguir as etapas seguintes:  
 A, B, C, D, E, F, G, H, I, J, K, L





Note: cable **SR2 USB01** has been fully tested under all supported Windows operating systems and has been approved for its functionalities.

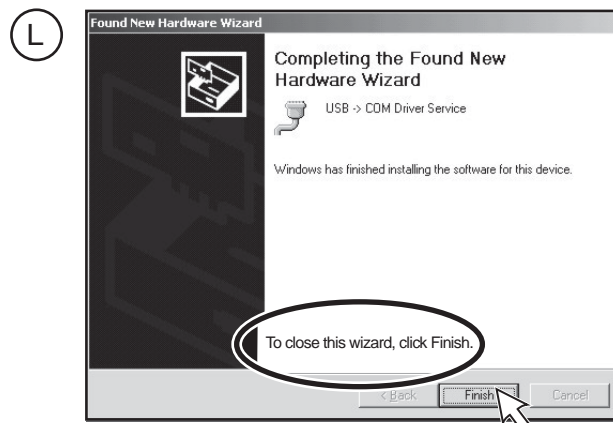
Nota : le câble **SR2 USB01** a été entièrement testé sous tous les systèmes d'exploitation Windows supportés et a été approuvé pour ses fonctionnalités.

Hinweis: Das Kabel **SR2 USB01** wurde mit allen unterstützten Windows-Betriebssystemen vollständig geprüft und für seine Funktion zugelassen.

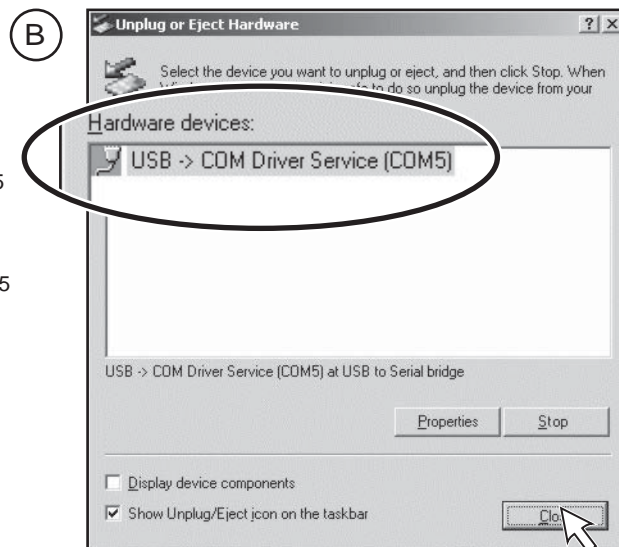
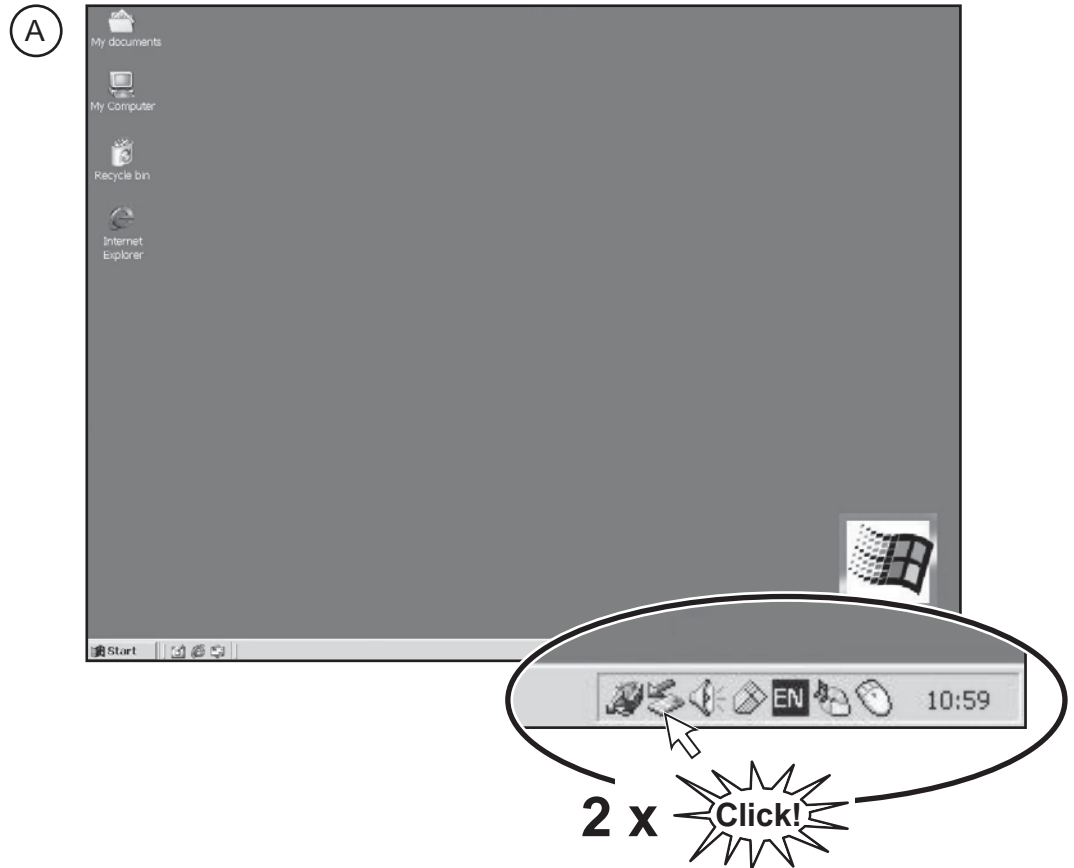
Nota: el cable **SR2 USB01** ha sido probado íntegramente en todos los sistemas operativos Windows soportados y ha sido aprobado para sus funcionalidades.

Nota: il cavo **SR2 USB01** è stato testato con successo in tutti i sistemi operativi supportati da Windows ed è stato approvato per la loro funzionalità.

Nota: o cabo **SR2 USB01** foi completamente testado em todos os sistemas operativos suportados e o seu funcionamento foi aprovado.



- 2** To find the COM port number of the installed USB cable **SR2 USB01**, apply the following steps:
- Pour rechercher le numéro de port COM du câble USB **SR2 USB01** installé, suivre les étapes suivantes :
- Um die COM-Port-Nummer für das installierte USB-Kabel **SR2 USB01** zu suchen, führen Sie folgende Schritte durch:
- Para buscar el número de puerto COM del cable USB **SR2 USB01** instalado, seguir los siguientes pasos:
- Per cercare il numero di porta COM del cavo USB **SR2 USB01** installato, seguire i punti seguenti:
- Para procurar o número da porta COM do cabo USB **SR2 USB01** instalado, seguir as etapas seguintes:



Example: for COM 5  
 Exemple: pour COM 5  
 Beispiel: COM 5  
 Ejemplo: para COM 5  
 Esempio: per COM 5  
 Exemplo : para COM 5